

Welcome to Intellect,
Your Partner in Elevating
Your Organisation's
Wellbeing

Thank you for choosing Intellect as your partner in elevating your organisation's wellbeing. We're excited to welcome you on board!

In this deck, we'll share an overview of Intellect and key resources you can use to ensure a successful partnership. Your Client Success Manager will have an official onboarding call with you soon; in the meantime, take some time to go through this deck – we hope you'll find this valuable!

Contents

- Who we are
- Our services
- How we support your communications and engagement plan
 - Pre-launch and launch assets
 - Year-round assets
 - How to use Canva to edit assets
- How we support your learning and development (L&D) initiatives
- How we support your role in organisational wellbeing

Who we are

Intellect is a modern **mental health company** providing end-to-end mental healthcare.

Our new approach makes it easy for individuals, communities, and organisations to prioritise their wellbeing.

Backed by the world's top investors & partners



Partnered with leading research institutions



As featured in



Intellect invests heavily in our science and clinical efficacy

Developed by our team of leading psychologists, researchers, & partner institutions



93%

of users reported a significant **reduction** in anxiety levels



81%

of users reported **improved** ability to regulate their emotions



76%

of users reported **increased** ability for coping with challenges

Intellect provides hyper-localised mental healthcare services, serving over 120 languages, 100+ countries, and 4 million members globally.

Use the Intellect platform in the language you are most comfortable with and work with local providers who understand the cultural context



Your 24/7 Wellbeing Companion



Intellect Holistic

Nutritional, physical, and financial support

1:1 virtual sessions, in-platform text messaging, and content covering a range of wellness pillars



Intellect Proactive

Self-care features & skill-building programmes

Self-guided programmes and sessions that develop skills and support wellbeing



Intellect Coaching

Behavioural Health Coaching (Live & text-based teleconsult)

Live consults with licensed coaches and counsellors (sub-clinical)



Intellect Care

Clinical counselling & therapy

Virtual or face-to-face sessions with counsellors and Clinical Psychologists



Intellect Helpline

EAP services (24/7 helpline, on-site support)

On-demand support for urgent and crisis care

Healthy state

Moderate to high stress

Clinical need

Crisis need

How we support your communications and engagement plan

Getting your organisation to use a wellbeing benefit can be tough. We get it. Our communications approach is not just about boosting Intellect usage; it empowers you to de-stigmatise mental health, build a culture of support, and ensure that anyone and everyone gets the right care at the right time.

Together, we'll create meaningful change and achieve a healthier, happier, and more resilient organisation.



Pre-Launch

Tease the launch of Intellect and invite your organisation to the launch session.



Launch

Supplement the launch session with a multichannel communications approach that builds the foundation and encourages early adoption.



Year-Round

Embed Intellect into your communications and wellbeing strategy with relatable and approachable content to create organisational change.

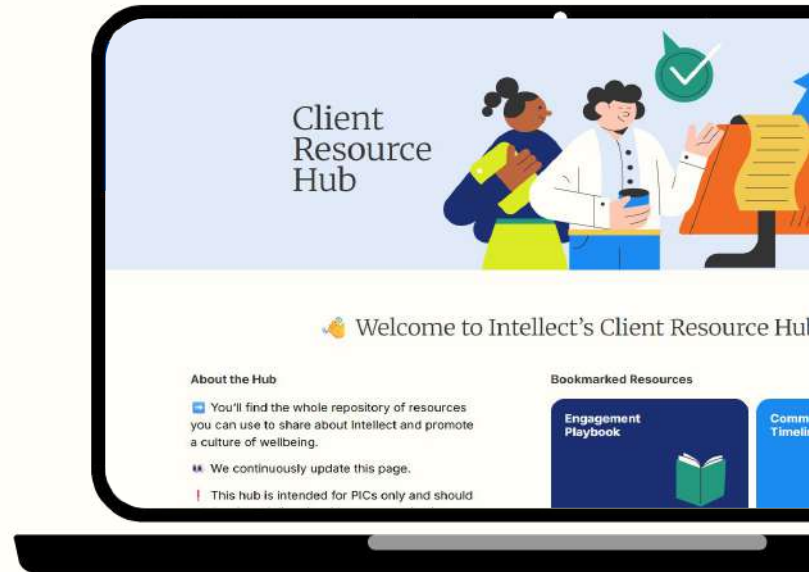
Client resource hub

To support you in the best way possible, Intellect has created a self-service client resource hub with everything you need for your communications and engagement plan.

In this hub, you'll find the full range of collateral and assets you need for your pre-launch, launch, and year-round engagement.

The next few slides details the key resources available to you, and we encourage you to explore and familiarise yourself with the full hub.

[Explore the hub](#)



How we support your communications and engagement plan

Pre-launch and launch assets

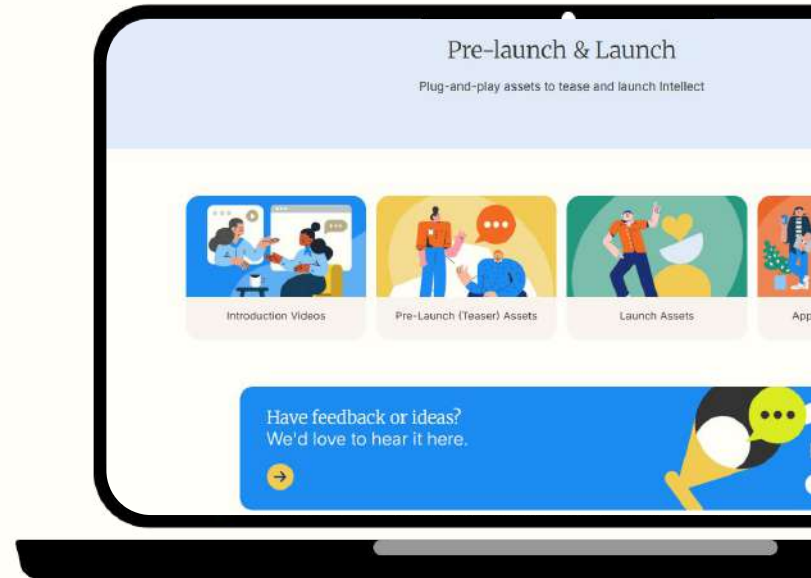
You'll have the option of hosting launch webinars or events*. Your Client Success Manager will work with you to plan the session and ensure it runs smoothly.

Tease the Intellect launch and invite your organisation to the session with our plug-and-play pre-launch assets. Then choose from a wide range of launch assets to drive awareness of your new wellbeing benefit.

We've made it easy for you to just copy and paste text and co-brand accompanying visuals to send to your organisation over whichever channel works best. You'll have free reign over the final copy and imagery without having to start from scratch.

**Access pre-launch
and launch assets**

**depending on your contract with Intellect*



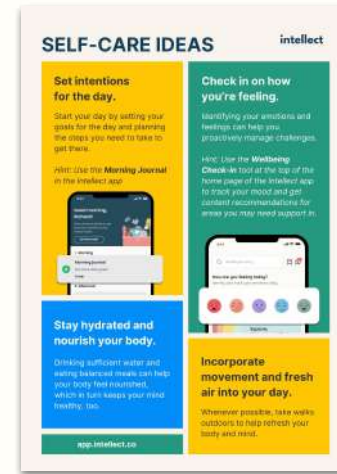
Year-round assets

Sharing about Intellect doesn't end after the launch buzz dies down. Keep the momentum going all year long with:

- **Evergreen digital and printable collateral** such as digital slides, posters, and more
- **Monthly mini campaigns** that touch on a different topic each month to make wellbeing relatable to the different people in your organisation
- **Infographics** that managers and team leads can use to educate employees on the different features and services available and encourage utilisation

Just like the pre-launch and launch assets, using these is as easy as copying and pasting text and re-branding collateral in just a few clicks.

Embed these into your existing communications strategy, or use Intellect's proposed engagement plan.



Access evergreen collateral

Access monthly mini campaigns

Access infographics

How we support your communications and engagement plan

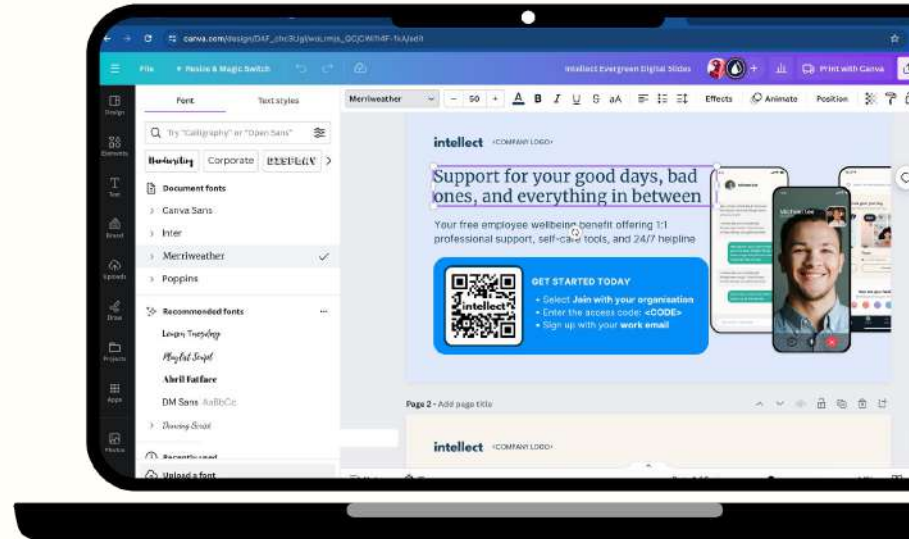
How to use Canva to edit assets

We make co-branding or designing collateral simple by hosting everything on Canva, a free-to-use online graphic design tool.

Add your organisation's logo, change colours and fonts, add in organisation-specific information (like your access code), and more with our pre-designed templates.

If you've never used Canva before, check out our step-by-step guide. Need more support? We'll train you and your team at no additional cost! Just reach out to your Client Success Manager.

[View the Canva guide](#)



How we support your learning and development (L&D) initiatives

Intellect's Learning and Development Offerings enables you to address organisational health, engagement, and resilience holistically.

Our Learning Delivery Framework addresses the fundamental, personal, and professional needs for people of different backgrounds — underpinned by strong evidence and science-backed research.

Our Client Solutions & Consulting team will work with you to complement your existing L&D initiatives or craft a solution tailored to your organisation*.

[Learn more and view Intellect's L&D catalogue](#)



How we support you

How we support your role in organisational wellbeing

Whether you're new to your role or have years of experience, working in Health, Wellbeing, and Benefits isn't easy.

From e-books and articles to webinars and events, Intellect is constantly working on new resources that aim to inspire and empower you to approach wellbeing strategically, support your organisation, and excel in your role.

Browse resources on your own, or keep an eye out for Intellect's HR Circulars where you'll receive updates directly to your inbox*.



Browse articles

Browse e-books and reports

Browse case studies

Our journey
has just
begun.

Questions? Email
clientsuccess@intellect.co